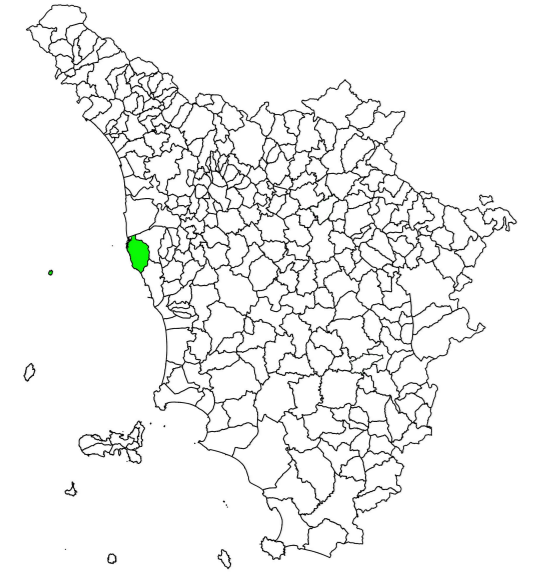


Attuazione dell'art. 11 della legge 24 giugno 2009, n. 77

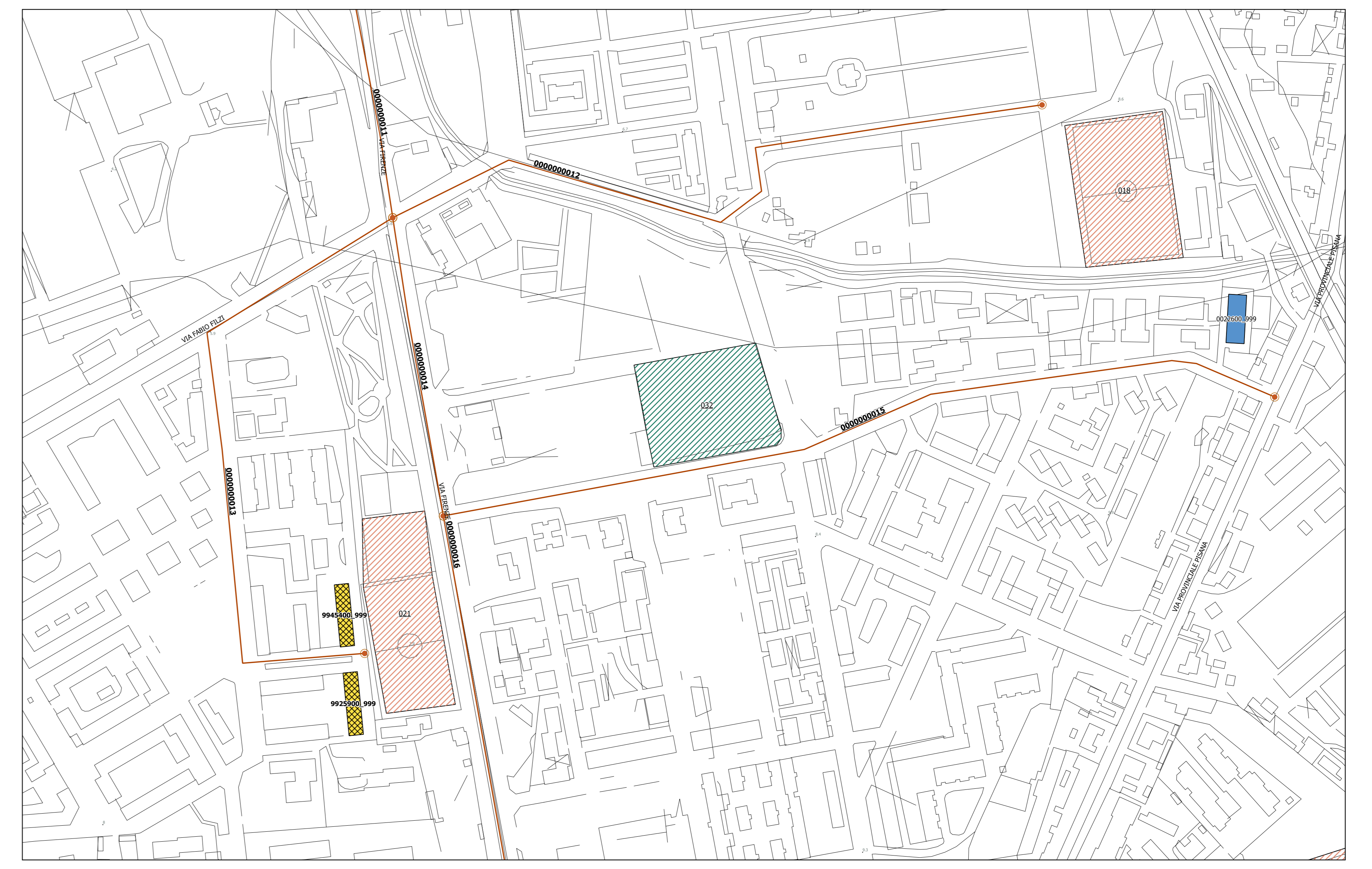
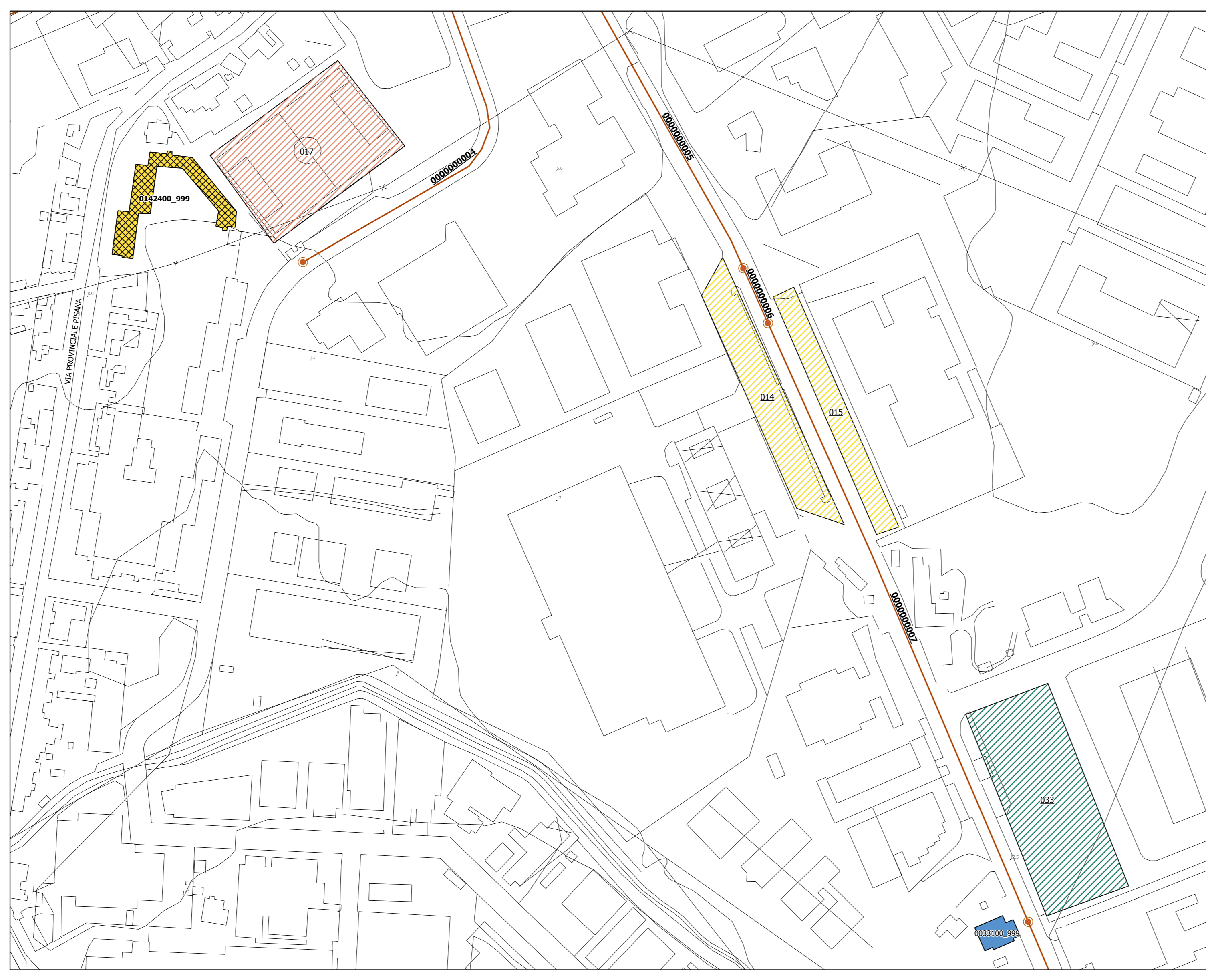
ANALISI DELLA CONDIZIONE LIMITE PER L'EMERGENZA (CLE)

scala 1:2.000

Regione Toscana
Comune di Livorno








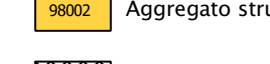




Regione Toscana	Soggetto realizzatore: Geologica Toscana snc Dott. Geol. Aurora Martini Dott. Geol. Paolo Castellani	Data: 25.06.2019
	Ing. Alessio Pace	



Legenda

Codice Provincia: 049
Codice Comune: 009

Sistema di gestione dell'emergenza

-  Edificio strategico
-  Area di emergenza (AMMASSAMENTO)
-  Area di emergenza (RICOVERO)
-  Area di emergenza (ATTESA)
-  Infrastruttura di connessione
-  Infrastruttura di accessibilità
-  Aggregato strutturale
-  Unità strutturale interferente appartenente ad un AS
-  Unità strutturale non interferente appartenente ad un AS
-  Unità strutturale interferente isolata

